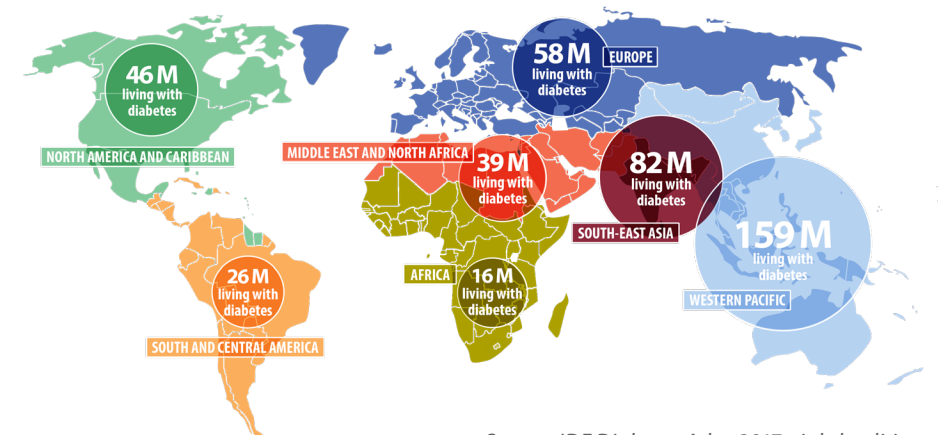


The logo for EASD features the letters 'E', 'A', 'S', and 'D' in a large, bold, white sans-serif font. To the left of the 'E' are three horizontal white bars of equal length, stacked vertically. The 'A' has a triangular cutout in its center. The 'S' and 'D' are solid and rounded.

EASD
CORPORATE
MEMBERSHIP

JOIN EASD - THE INTERNATIONAL DIABETES COMMUNITY



Source: IDF Diabetes Atlas 2017, eighth edition

Diabetes is on the rise in countries all over the world. Today, 425 million people worldwide are estimated to be affected by diabetes. This number is even projected to increase to some 629 million in 2045.

In the light of these alarming figures diabetes is undoubtedly one of the most challenging health problems of the 21st century.

EASD is one of the largest networks for diabetologists worldwide with the mission to promote excellence in diabetes care through research and education.

We invite you to become a Corporate Member of EASD and join our powerful global community committed to tackle and eventually eradicate diabetes.

EASD CORPORATE MEMBERSHIP - BENEFITS AT A GLANCE

- Invitation to a Pre-Meeting & Site Visit by our Industry PCO to the location of the upcoming EASD Annual Meeting – co-ordinate the planning of the Industry Exhibition and other matters relating to the organisation and attendance at the EASD Annual Meeting
- Receive full delegates registration to the EASD Annual Meeting
 - Gold Members: 3 delegates
 - Silver Members: 2 delegates
 - Associate Members: 1 delegate
- Annual invitation to meet with the EASD Board – discuss all matters concerning the Association and Industry
- Get one annual EASD Individual Membership for the main contact person including all EASD membership benefits
- Collaborate with the Association's Foundation EFSD – any requests for funding from Corporate Members are handled with high priority
- Support our Postgraduate Training Courses and online educational activities on the treatment of diabetes and its complications all over the world
- Get listed on the EASD website with company logo

EASD CORPORATE MEMBERSHIP FEES

Euro 10,000

for **GOLD** Membership

Euro 5,000

for **SILVER** Membership

Euro 2,500

for **ASSOCIATE** Membership

EASD Corporate Membership is always valid for a calendar year.

CONTACT EASD

The EASD Membership Department is ready to assist:

Phone: +49 211 758 469 0

Email: membership@easd.org

Web: www.easd.org/membership.html

ABOUT EASD

The European Association for the Study of Diabetes e.V. (EASD) is a membership based academic non-profit organisation with more than 4,000 members worldwide. It was founded in 1965 and is based in Düsseldorf, Germany.

The aims of the Association are to encourage and support research in the field of diabetes, the rapid diffusion of acquired knowledge and to facilitate its application.

The EASD Annual Meeting is one of the largest diabetes related conference in the world with more than 15,000 participants from over 130 countries.

EASD is also an active player in postgraduate education inside and outside of Europe. Since 1972,

EASD has trained over 30,000 health care professionals through postgraduate training courses and online education activities.

In 2000, EASD increased its commitment to stimulate diabetes research in Europe by creating the European Foundation for the Study of Diabetes (EFSD). Since its inception, EFSD has committed over Euro 100 million to diabetes research in Europe by various funding means.

EASD's official journal is Diabetologia, a major monthly international diabetes publication.

For more information, please visit: www.easd.org.



EASD CORPORATE MEMBERSHIP

European Association for the Study of Diabetes e.V.

Rheindorfer Weg 3
40591 Düsseldorf
Germany

Phone: +49 211 758 469 0
Email: membership@easd.org
www.easd.org